

Trust Offer to Schools and Pathfinders

The Dyslexia-SpLD Trust offer to all schools and to those working with schools includes the following ***freely accessible*** resources:

Interventions for Literacy

The Dyslexia-SpLD Trust on-line, searchable database of effective literacy interventions based on Professor Greg Brooks' What Works for Pupils with Literacy Difficulties; Interventions for Literacy.

Literacy and Dyslexia-SpLD Professional Development Framework

The Dyslexia-SpLD Trust Professional Development Framework aims to establish a consensus on the core skills and knowledge of those with various roles in teaching and supporting children with dyslexia and to help strategically address CPD to improve outcomes for these students.

Empowering Parents and Carers

The Dyslexia SpLD Trust's network to empower parents and carers to support their children with dyslexia or specific learning difficulties at home, in school and in the community by providing face to face and virtual advice, expert knowledge, national events and resources.

Models of Good Practice

The Dyslexia-SpLD Trust suite of case studies and models of good practice demonstrating best practice using effective interventions and a range of models.



**FURTHER
INFORMATION
AND RESOURCE
AVAILABLE
FROM OUR
PARTNERS**

The Dyslexia-SpLD Trust partner organisations have over 120 combined years of expertise and experience in delivering high quality services to families and schools in support of individuals with dyslexia or specific learning difficulties. The Trust has compiled a directory of school resources from all our partners.



Through our shared vision, we bring together and provide a combined voice amongst the organisations working to improve outcomes for individuals with dyslexia and specific learning difficulties.

The Dyslexia-SpLD Trust is a collaboration of voluntary and community organisations that disseminates reliable information and provides improved choice for parents and schools by offering a wide range of knowledge and services. Through our shared vision, we bring together and provide a combined voice amongst the organisations working to improve outcomes for individuals with dyslexia and specific learning difficulties. Our continuing active participation in strategic partnerships and linking with national initiatives extends the reach of each of our member organisations.

Through our Trust programmes of work we have taken, and continue to take, an active role in helping to raise expectations and show how children and young people with dyslexia or specific learning difficulties can achieve great success. The collaborative programmes we have undertaken in the last few years and are currently pursuing provide valuable resources to the SEN community. A key Trust aim has been the development of expertise across the teaching workforce and the dissemination of information about what is effective.

Our simple message is that dyslexia and specific learning difficulties should not be a cause of educational underachievement or failure, because we now know what works in terms of teaching, resources and other support to enable children to succeed. A second thrust of the Trust's work has been our effort to ensure that this knowledge and expertise is made available in all schools. This has been achieved by providing input and advice to guide the development of services for Government and training agencies, training providers and individual schools and teachers.

DIRECTORY OF USEFUL INFORMATION AND RESOURCES

Dyslexia Screening	4
Psychologist and Specialist Teacher Assessments for Dyslexia/SpLD	8
Teaching and Tutoring	10
Whole School Approach	12
Teaching Resources	14
Information	16
Training	18
Help for Parents	24
Booklets, publications and e-resources	28
Local Groups	30



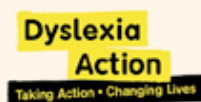


Dyslexia Screening

Screening and Assessment Centres



[BDA website](#) offers a high quality adult screening test (15 yrs +) - Spot Your Potential.

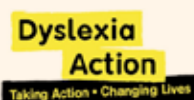


[Dyslexia Action](#) has 26 centres around the UK providing screening and assessment for all ages.



The Helen Arkell Dyslexia Centre can advise on [screening and assessment](#) across the age range. Family and school questionnaires can be downloaded from [here](#).

Consultations



[Dyslexia Action](#) has 26 centres around the UK providing free consultations to parents and schools.



[The Helen Arkell Dyslexia Centre](#) holds consultations with experienced professionals to see if an assessment is appropriate. The consultation takes 45 minutes (subsidised fee £55 which may be waived in cases of hardship). Because dyslexia manifests itself in different ways in different individuals we always recommend an initial consultation in order to take gain a broad vision of the potential challenges. The consultation is with an experienced professional and is held directly with adults or parents who think their child may be dyslexic, or have other difficulties with learning. We can then work together to see if an assessment is appropriate.

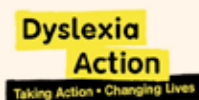


A [national register](#) of qualified specialist SpLD tutors and assessors.

Checklists



The BDA website 'About Dyslexia' section has checklist indicators for [primary and secondary schools](#) and [adults](#) (15 yrs +).

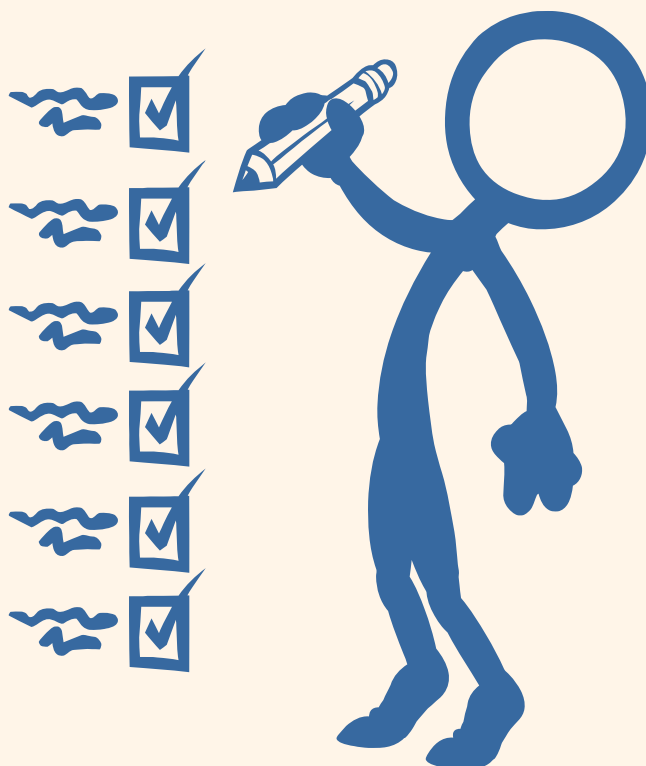


[Dyslexia Action](#) has a checklist for dyslexia type difficulties.

Dyslexia Action also has a Hidden Disabilities Questionnaire (HDQ). The HDQ is a 32-item screening questionnaire that highlights features of hidden disabilities including Dyslexia, Dyspraxia and Attention Deficit Disorder. It should be emphasised that the HDQ was developed to pick up on features of different hidden disabilities – it is not a formal diagnostic procedure and is designed for people aged 14 and up. However it can be used to highlight those individuals who, without some adaptations to the programmes that they are given, are not likely to respond well; it can also identify those who may need further detailed assessment.

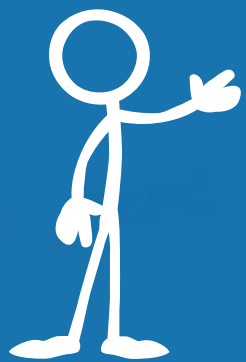


The Helen Arkell Dyslexia Centre family and school questionnaires can be downloaded from [here](#).



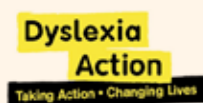


Shrimps and crabs and shells,
funny fishy smells.



**Psychologist and
Specialist Teacher
Assessments for
Dyslexia/SpLD**

Centres



[Dyslexia Action](#) has 26 centres around the UK providing screening and assessment for all ages. These include psychology and specialist teacher assessments.



[The Helen Arkell Dyslexia Centre](#) based in the South East, has its own team of highly trained specialist assessors (HASAs) who are professionally qualified to assess, report and advise on all aspects of dyslexia. A team of Educational Psychologists are referred to when there are complex problems ranging beyond literacy.



Guidance on Assessment Best Practice through publications, e-mail helpline, CPD events - [found here](#).
Publications: Dyslexia: Assessing for Access Arrangements for Examinations, published in conjunction with the Joint Council for Qualifications - [click here](#).
Dyslexia? Assessing and Reporting; the Patoss Guide
Largest provider of SpLD Assessment Practising Certificates underpinning best practice - [here](#).

List of professionals

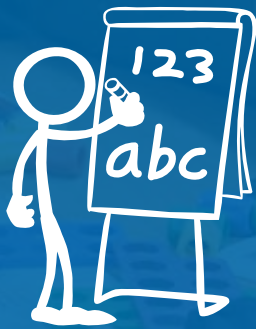


The BDA has a national list of Dyslexia/SpLD Specialist Qualified Teachers and Practitioners holding Approved Teacher Status (ATS), Approved Practitioner Status (APS) and Associate Member of the British Dyslexia Association (AMBDA).

Tel: 01344 381560 **Email: accreditation@bdadyslexia.org.uk**



A [national register](#) of qualified specialist SpLD tutors and assessors.

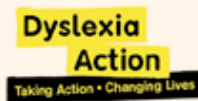


Teaching and Tutoring



The BDA has a national list of Dyslexia/SpLD Specialist Qualified Teachers and Practitioners holding Approved Teacher Status (ATS), Approved Practitioner Status (APS) and Associate Member of the British Dyslexia Association (AMBDA).

Tel: 01344 381560 Email: accreditation@bdadyslexia.org.uk



[Dyslexia Action](#) runs several teaching and tutoring courses including Early intervention, study skills and tailor made programmes for all.



The Helen Arkell Dyslexia Centre offer [specialist individual tuition](#) for dyslexic individuals of all ages with teaching programmes devised for each individual based on assessment.



A [national register](#) of qualified specialist SpLD tutors and assessors.



[Springboard for Children](#) works in partnership with schools to create literacy centres in which we provide one-to-one literacy tuition and mentoring by SpLD qualified tutors and highly trained volunteers. Springboard implements a tailored phonics intervention with a strong focus on the application of skills in reading, writing and spelling.



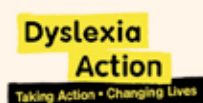
Whole School Approach





The BDA Dyslexia Friendly Quality Mark is a scheme to help schools, colleges and other organisations become dyslexia friendly. The documents to support this process, including our list of standards that a school should be following to be dyslexia friendly can be found [here](#).

For more information please email: qualitymark@bdadyslexia.org.uk or ring 01344 38 1551



Partnership for Literacy – Intervention Package: information for schools

Partnership for Literacy (P4L) is a proven model of literacy intervention from Dyslexia Action for primary and secondary schools which has now been remodelled into a smaller highly targeted package a school can assimilate within a single term. Schools are provided with the literacy materials, staff training and seven half days of apprenticeship training which allows staff to receive hands-on support for all aspects of the intervention.

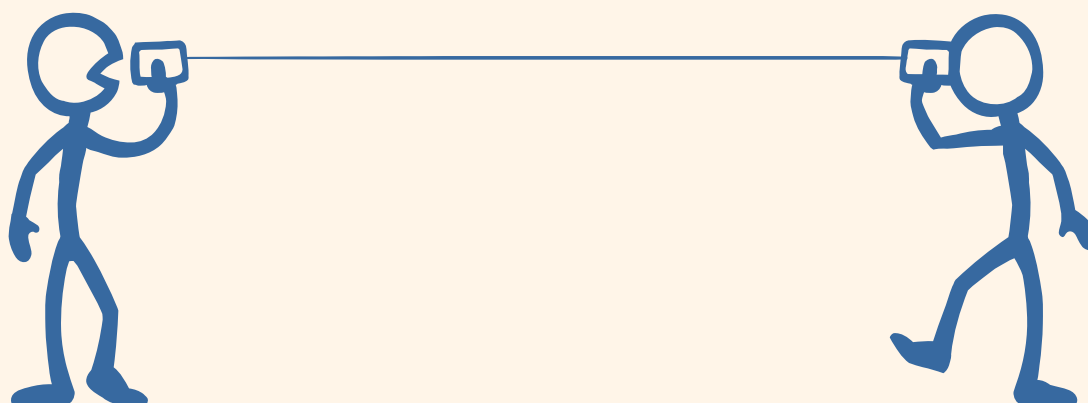
Dyslexia Action believes that P4L provides the whole school literacy intervention needed to enable all pupils to reach their literacy potential. P4L is suitable for primary and secondary schools as it targets literacy levels. For further information email: skilner@dyslexiaaction.org.uk



Helen Arkell Centre offers Inset to primary and secondary schools on identifying and supporting children with SpLDs in the classroom and across the curriculum.



[Springboard for Children](#) offers Consultancy support to schools in selecting, implementing and monitoring effective literacy interventions across Key Stage 1, 2 and 3.





Teaching Resources

beautiful

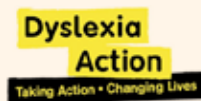


Interventions for Literacy

An on-line, searchable database of effective literacy interventions based on professor Greg Brooks' What Works for Pupils with Literacy Difficulties; Interventions for Literacy.



[The BDA](#) supplies a wide range of products for children, adults and professionals.



[Dyslexia Action](#) supplies specialist learning and teaching products for dyslexia and literacy. These include a complete range of products for: teaching professionals, psychologists, students (both children and adults) and parents.



[The Helen Arkell Dyslexia Centre](#) has a specialist dyslexia bookshop for all the words that you'll ever need to read. At the heart of dyslexia lies the written word and people are continually amazed how many words have been written about dyslexia – the more so as the science and art of identifying and supporting dyslexia didn't really take off until half way through the 20th century.



Information



The BDA has the only free [national helpline](#) for dyslexia with comprehensive information for all age groups and professionals: tel. 0845 251 9002.

The BDA also holds answers to the [frequently asked Helpline queries](#) for parents, students, teachers and adults.

The BDA has a [New Technologies Committee](#) to help with Specialist IT advice and information on assistive software and technology.



The Helen Arkell Dyslexia Centre has some suggestions for teachers and parents based on [frequently asked questions](#).



[Springboard for Children's website](#) offers advice and practical help to schools, children and families.



Training

A white stick figure is standing on the right side of the slide, holding a large book or tablet. The figure is simple, with a circular head and thin limbs. The background is a solid blue color.



Literacy and Dyslexia-SpLD Professional Development Framework

A professional development framework to establish a consensus on the core skills and knowledge of those with various roles in teaching and supporting children with dyslexia and to help strategically address CPD to improve outcomes for these students.

Courses

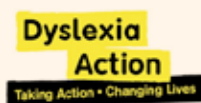


The BDA provides training on Dyslexia and other SpLDs for teachers, TAs, parents and school governors, as well as employers. We run over 400 courses each year across England and Wales, ranging from basic awareness training to fully accredited OCN qualifications. For more information on our courses and how to book, [please visit here](#).

The BDA provides Associate Membership of the British Dyslexia Association (AMBDA), Approved Teacher Status (ATS) and also Approved Practitioner Status (APS) awards for individuals as well as Assessment Practicing Certificates, Teaching Practicing Certificates and Practitioner Practicing Certificates, [please see here](#).

The BDA has a list of [BDA accredited courses](#) where teachers and individuals can train to teach and assess those with dyslexia. There are likely to be new courses added in the summer.





Dyslexia Action Training and Professional Development is a leading provider of specialist training courses in the field of Dyslexia and Specific Learning Difficulties (SpLD) for teaching professionals.

Our short course programmes have been developed especially to enable teachers and teaching assistants to put strategies in place for learners with dyslexia and co-occurring difficulties. Our [CPD programmes](#) build up progressively through individual units into awards, certificates and diploma qualifications.

[The Dyslexia Action Postgraduate Certificate and Diploma in Dyslexia and Literacy](#) is a unique and prestigious programme at Master's level that provides the training for qualified teachers to become informed practitioners and specialist teachers and/or assessors. The courses are modular and flexible and are undertaken part time, mostly through online learning and with occasional study days.

Dyslexia Action is also able to provide [bespoke training](#) for groups either through customised online delivery or through face-to-face delivery delivered by specialist tutors.

[The Dyslexia Guild](#) is the professional membership association of Dyslexia Action. The Guild maintains the National Training and Resource Centre for Dyslexia and SpLD and provides a wide range of benefits to members. These include online resources, a vibrant and topical journal, Dyslexia Review, as well as an e-newsletter. Guild members are able to renew their Assessment Practising Certificate through the association and meet annually to network at the Summer Conference.



[Supporting dyslexics in the classroom](#) has become an increasing focus in UK education and HADC offers a range of courses to enable teaching professionals at all levels to gain recognised qualifications in dyslexia and other SpLD support.



Patoss has:

- A programme of [CPD events](#) on a wide range of dyslexia-SpLD support and assessment topics.
- [Bespoke CPD](#) to schools, colleges and other groups.
- [A network of local groups](#) providing opportunities to meet and share knowledge on SpLD topics, full listing on the Patoss website.
- Patoss are the largest provider of [SpLD Assessment Practising Certificates](#) underpinning best practice.



[Springboard for Children](#) offers training courses for Teachers, Teaching Assistants and other interested professionals across KS 1, 2 and 3. With an emphasis on practical skills, courses focus on supporting children both inside and outside the classroom, who are struggling with reading, writing and spelling. They are delivered at central locations or in-school and are also suitable for whole staff groups.

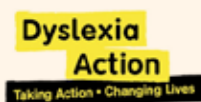


Bespoke Training / INSETs



BDA Training can also deliver any of our courses on-site or can work with clients to create an entirely bespoke session. Onsite training for schools ranges from twilight, half-day and one day INSET programmes, to fully accredited OCN courses at Level 2 or 3. Training for employers covers all aspects of awareness of dyslexia in the workplace and making reasonable adjustments, and can be delivered as single half- or full-day sessions, or as part of an OCN accredited course, including a Workplace Assessors' Programme.

For information about onsite, bespoke training and for support to staff who are dyslexic, please email onsitetraining@bdadyslexia.org.uk or call Liz Horobin, Head of Training, on 01344 381561.



Dyslexia Action also offers bespoke training and INSET days.



The Helen Arkell Dyslexia Centre offers bespoke Inset and CPD to schools, colleges and other groups.



[Patoss](http://patoss.org.uk) offers bespoke CPD to schools, colleges and other groups.



[Springboard for Children](http://springboard.org.uk) offers training courses for Teaching Assistants across KS 1, 2 and 3, supporting children both inside and outside the classroom, who are struggling with reading, writing and spelling. These courses are also suitable for whole staff groups.

Email: training@springboard.org.uk





Help for Parents

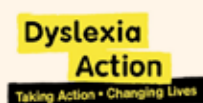


Empowering Parents and Carers

A support network to empower parents and carers to support their children with dyslexia or specific learning difficulties at home, in school and in the community by providing face to face and virtual advice and expert knowledge, national events and resources.



- [BDA National Helpline](#): the only free national helpline for dyslexia. Parents can contact the Helpline by phone 0845 251 9002 or email helpline@bdadyslexia.org.uk
- Information for Parents - [The BDA website](#) offers comprehensive information for parents.
- In particular, parents are offered very helpful advice in the [Frequently Asked Questions](#) section.



Dyslexia Action has a [DIY pack for parents](#) available from their shop.



The Helen Arkell Dyslexia Centre offer:

- [initial consultations for parents](#)
- [open days for parents](#)
- [places on Level 3 courses](#)
- [summer schools](#) and personalised learning during vacation times.
- [parents courses](#)





[The SpLD Resources Booklet](#), has a wealth of information to help and support parents, carers and other professionals. It can be downloaded from the Patoss website free of charge.

Information sheets on a range of topics for parents and professionals, [downloadable from Patoss website](#) free of charge

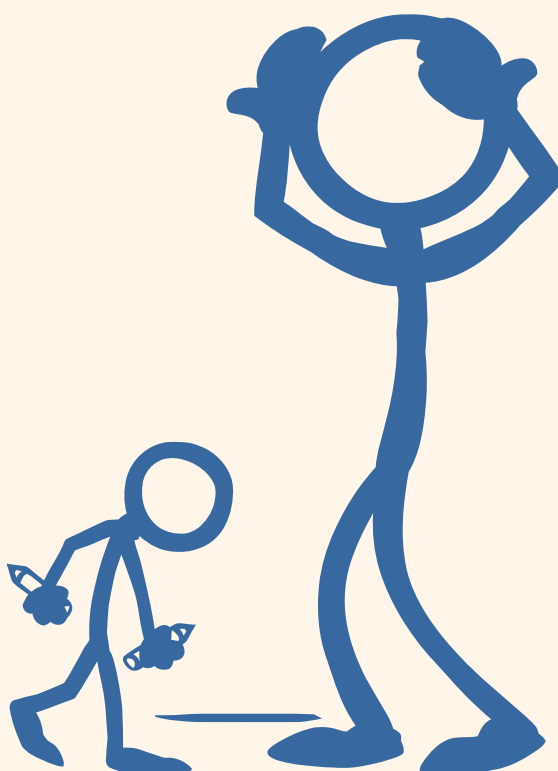
- [Supporting membership](#) offering a range of publications and opportunities to attend conferences and events at reduced prices
- [A network of local groups](#) providing opportunities to meet and share knowledge on SpLD topics, full listing on the Patoss website
- A [national register](#) of qualified specialist SpLD tutors and assessors.
- [A variety of publications for parents](#)

Grasping the Nettle; How Dyslexics Learn by C Saunders & A White, Patoss



[Springboard's 'A Parent's little Guide to Helping Children Read'](#) offers 10 practical tips for helping your child's reading. It is free to parents and also available in Turkish, Bangla, Arabic, Mandarin, Polish and Spanish. Springboard for Children offers regular parent/carer information sessions in schools, the workplace and with community partners.

Email: info@springboard.org.uk







Booklets, publications and e-resources

Dyslexia
Screening Test –
Junior (DST-J)

Dr Angela J. Fawcett and Professor Rod



Models of Good Practice

A suite of case studies and models of good practice demonstrating effective interventions and a range of models.



The BDA offers:

- [An annual Dyslexia Handbook](#) with articles by specialists and professionals, also Code of Practice for Employers and Guide for Justice Professionals.
- [E-learning site](#) with free resources. Designed as a storage base for parents information, e-learning houses information sheets on topics from what dyslexia is to SEN tribunals.
- Comprehensive information on the [website](#).



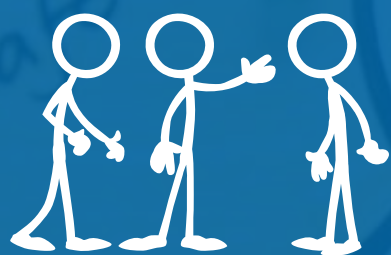
Patoss offers:

- [A variety of publications:](#)
Grasping the Nettle; How Dyslexics Learn by C Saunders & A White, Patoss
Dyslexia: Assessing for Access Arrangements for Examinations, ed A Jones, published in conjunction with the Joint Council for Qualifications, Patoss
Dyslexia? Assessing and Reporting; the Patoss Guide, ed G Backhouse & K Morris, Hodder
- [SpLD Resources Booklet](#), a wealth of information to help and support parents, carers and other professionals. It can be downloaded from the Patoss website free of charge.
- Information sheets on a range of topics for parents and professionals, [downloadable from Patoss website](#) free of charge
- [A network of local groups](#) providing opportunities to meet and share knowledge on SpLD topics, full listing on the Patoss website.



[Springboard's 'A Parent's little Guide to Helping Children Read'](#) offers 10 practical tips for helping your child's reading. It is free to parents and also available in Turkish, Bangla, Arabic, Mandarin, Polish and Spanish

Email: info@springboard.org.uk



Local Groups





The BDA has a network of 62 affiliated [Local Dyslexia Associations](#) around the country, providing local advice information and support, including specialist help from trained volunteer Befrienders for parents seeking Statements of special educational need. Some Associations offer resources such as Saturday schools and screening.



[A network of local groups](#) providing opportunities to meet and share knowledge on SpLD topics, full listing on the Patoss website.





The Dyslexia-SpLD Trust

Unit 8
Bracknell Beeches
Old Bracknell Lane
Bracknell
Berkshire
RG12 7BW

Tel: 01344 381 564
E: info@thedyslexia-spldtrust.org.uk
www.thedyslexia-spldtrust.org.uk