

IN THIS ISSUE

Director's message

Welcome to this summer edition of our newsletter with a focus on working together. We are delighted to share information on how the dyslexia sector has been awarded government funding to support the needs of dyslexic children.

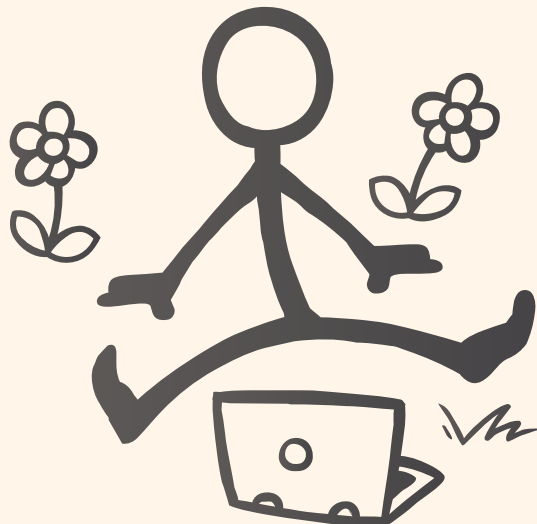
The national projects demonstrate how effective and collaborative partnerships provide the maximum benefit to those that need it. In these historic times of educational change the wider SEN sector has realised that in unison we can make a real difference by sharing good practice, strengthening our common messages and joining forces to influence and shape policy whilst supporting government.

You continue to be our valued critical friends, whether you are a parent, professional or practitioner. Your views and feedback are important to our work and to the reforms ahead of us.



Mel Byrne
Director

Director's message	1
Focus on...	2
Project highlights	4
News	7
Diary dates	7
Your say	8





Focus on...working together

Sound Check

A Primary Literacy Project in Key Stages 1 & 2

The results for the phonics reading check 2012 identified over 235,000 (40%) pupils who did not reach the expected standard (32 out of 40) and who, as a result, need to receive additional reading support from in school.

What is of major concern is that only **44% of disadvantaged pupils**, those eligible for free school meals, met the required standard of phonic decoding. This was 17 percentage points lower than all other pupils.

The 'Sound Check' intervention aims to meet the needs of young people with a special education need around literacy, specific learning difficulties (SpLD), and English as an additional language (EAL), who, as identified through the phonics check, are likely to struggle to learn to read.

The intervention brings together the skills and expertise of three Third Sector organisations, the **British Dyslexia Association**, **Dyslexia Action**, and **Springboard for Children**, to produce a high quality, high impact, low cost offer. The proposed activity will meet the needs of pupils at the end of Key Stage 1 and support transition into Key Stage 2 using the phonics check as a key determinant. This project is based on **early intervention** principles – acting in Key Stage 1 to prevent or mitigate literacy issues later on in a child's educational career.

As the project will use a test as a key determinant, we will be able to demonstrate measurable improvement in outcomes for pupils, building on what is already there in terms of school knowledge and understanding, and creating a sustainable partnership model.

Over two years, the project will:

- Work with **27 schools**, nine in each of three geographical areas
- Work with **3 cohorts** of pupils comprising over **800** children from around **160 class groups** across Key Stage 1;
- Provide specialist screening and an intervention programme working on literacy skills and phonics
- Recruit and train a team of volunteers who will provide additional support sessions to children.
- Deliver whole school training to all participating schools.
- Deliver workshops to parents and carers of children at participating schools.





Cornwall Dyslexia Service

Cornwall Dyslexia Service recently held its 10th Annual Conference with the focus on Parent Support, where Lorraine Thomas from the Parent Champions, shared the keynote speaking with Brian Lamb. Lorraine spoke about the Parent Champion initiative as well as the launch of the Understanding Dyslexia booklet which was distributed to every delegate attending on the day.

Since then, Cornwall is now planning to launch a Parent Champion event in November for all parents and school staff to attend to find out more about the initiative and the training opportunities and networking possibilities that could subsequently be developed in Cornwall and beyond. Interest at an individual level has already started, but the launch is expected to generate more interest.

At the same event the launch of a secondary booklet for students and their parents/carers will also take place. This booklet is currently being written and designed by a group of young people and their parents and will be available to all schools in Cornwall after the launch.



Project highlights - new joint work in the year ahead

NEW DfE contract for services

As announced in the last edition of our newsletter, The Trust has been successful in securing a contract for services from the Department for Education for 2013-15.

We can now reveal that the contract covers 4 key areas of work; some new and some which build on our existing successes.

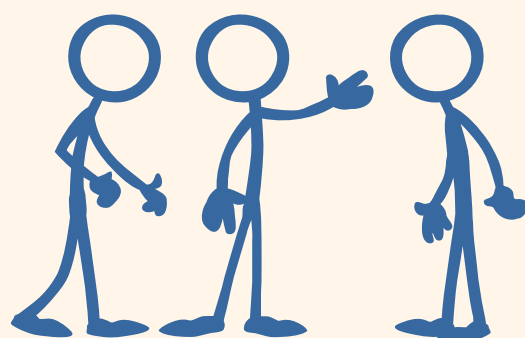
Providing guidance to schools and local authorities

Led by Dyslexia Action and in collaboration with other Trust member organisations, this project will seek to disseminate information to schools and local authorities on how to support children and young people with specific learning difficulties such as dyslexia in light of the SEN Reforms. This will be cascaded by using a learning package made readily available in a number of formats. The guides will include:

- Good practice guide
- Local offer exemplar
- School funding reform guide
- Guide to single SEN category

Support and guidance for practitioners

The Literacy and Dyslexia-SpLD Professional Development Framework is now fully developed and readily available to schools, practitioners and anyone working with dyslexic learners or those with literacy difficulties. Our mission now is to ensure that all schools know how to access this collaboratively developed and freely available tool and Dyslexia Action and PATOSS will be leading this work with support from the British Dyslexia Association. This will be via direct training to school clusters, teaching schools, Pathfinders, FE colleges, Academy chains and training providers. We will be ensuring that those professionals accessing the resource know how to signpost to specialist services and how to access more specialist help.





Providing online advice and resources for parents

Helen Arkell Dyslexia Centre, supported by British Dyslexia Association and Springboard for Children, will oversee the development of a single comprehensive online source, aimed at parents and carers, for information on supporting children and young people with dyslexia/SpLD. This single portal will draw together the most up to date information available via all Trust member organisations, as well as signposting to external resources and examples of good practice. The portal will include resources and information for parents developed in collaboration with parents. It will ensure that, despite the changing landscape, the best possible information is easily accessible to parents and carers.

Supporting young people, including young offenders

This project, led by the British Dyslexia Association with collaboration from Dyslexia Action and Helen Arkell Dyslexia Centre, will involve two key elements:

- Consolidation of previous good practice and learning to develop a training package for those working with young offenders to improve identification and awareness of the needs of those young people with specific learning difficulties.
- Development and pilot of an ID card, to be used by Young Offenders to raise awareness of specific needs and to share information on accessibility as they move across agencies.

Your opportunity to get involved

The Literacy and Dyslexia-SpLD Professional Development Framework: Train-the-trainer opportunities

Do you run Dyslexia Training events? Are you responsible for School Improvement in Literacy or SEN? Are you the Inclusion Co-ordinator or Lead SENCo in a Teaching School, Academy Cluster or Local School Network?

If so, you may be eligible for free training in a specialist resource offered by The Dyslexia-SpLD Trust, funded by the DfE, that will help you to embed Literacy and Dyslexia-SpLD knowledge and awareness into your setting. This tool is based online and is free to use.



The Framework is currently available on <http://framework.thedyslexia-spldtrust.org.uk/> and you are welcome to make use of it. However, many practitioners have benefitted from specific training in how to roll the Framework out to their specific school, FE college, University, Initial Teacher Training Provider or Local Authority.

Training consists of two parts:

Core Module:

Introduction to the Framework and how to introduce it to your setting followed by either Module A or Module B (or both if required).

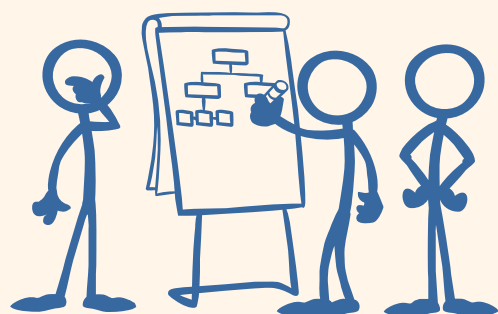
Module A: *Using the Framework to support CPD in Schools*

- How to develop an INSET from personalised reports and/or group report.
- How to develop an INSET from a 'Resource' based search.
- Introduce the 'Schools' Page.
- How to use the Framework to structure a staff team discussion.
- Using the Framework for benchmarking the individual teacher and supporting a professional development portfolio.
- Using the Framework to structure staff team workplace activities.
- Using the Framework to write School Development Plans.

Module B: *Using the Framework in Initial Teacher Training*

- Benchmarking Student Progress – before and after taking course or training programme
- Using the Framework to structure assignments
- Evaluating the content of an existing course
- Writing new courses

For further information, please contact Dr. Amelia Roberts on:
Amelia.Roberts@thedyslexia-spldtrust.org.uk



News

Gove withdraws illegal School Transport Guidance

<http://www.thedyslexia-spldtrust.org.uk/7/news/212/gove-forced-to-withdraw-illegal-school-transport-guidance/>

New information on Professional Skills Test for trainee teachers

<http://www.thedyslexia-spldtrust.org.uk/7/news/208/important-information-on-professional-skills-tests-for-trainee-teachers/>

Review of efficiency in the school system

You can read the review and see further details from the Trust on our website

<http://www.thedyslexia-spldtrust.org.uk/7/news/209/news-about-tas/>



Diary dates

International Youth Day

August 12th

International Literacy Day

September 8th

Dyslexia Awareness Week 2013

This year's theme is 'Beyond Words'

October 14th – 20th

For an information and activities pack on how you can get involved, please contact eoranni@bdadyslexia.org.uk

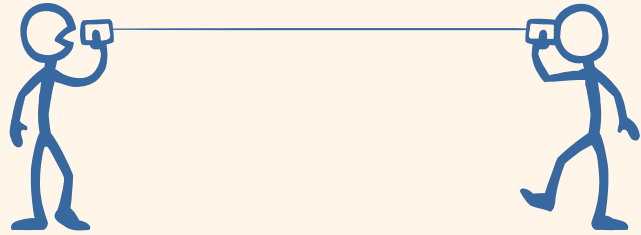
For details of events happening during the week, please see our [online calendar](#), which will be continually updated as the week draws near.

TES Exhibition

11th and 12th October
London



Your say



We are always interested in what our stakeholders have to say, as this helps to shape our work ahead.

If you are a parent and would like to share your experiences with other parents, perhaps you'd like to join our group on [Facebook Parent Champions?](#)

If you are a professional and would like to keep up to date on Trust activities, you can join us on [Facebook](#) or [Twitter](#)

We are always looking for contributors for our newsletters so please get in touch if you have an item you would like to be included in the newsletter. Alternatively if there is something you think we need to cover, please let us know.

Email the Editor, Sarah Hanna at sarah@thedyslexia-spldtrust.org.uk

