

## IN THIS ISSUE

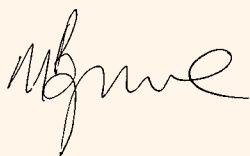
## Director's message

**Happy New Year and welcome to the January edition of the Dyslexia- SpLD Trust newsletter.**

It always seems like a particularly busy time in the run up to year end with fewer hours of daylight but a myriad of things to get done. We have met with the Education Select Committee, received their response in the form of their recommendations and heard the Secretary of State for Education, Edward Timpson, give evidence on the draft Children and Families Bill.

We have also met with the Department for Education to discuss the revision of the Code of Practice and the English Baccalaureate Certificate proposals. We continue to represent the voice of our dyslexic children, young people and the concerns of our parents during this worrying time.

I have been blessed recently with being able to find the time to attend some fantastic events; an Empowering Parents and Carers Parent Information Session and a fascinating talk hosted by the Helen Arkell Dyslexia Centre and delivered by John Rack. Both of these occasions reminded me of just how important our work is, inspiring me to remain committed to making things better for dyslexic children and young people in school.



Mel Byrne  
Director

Director's message

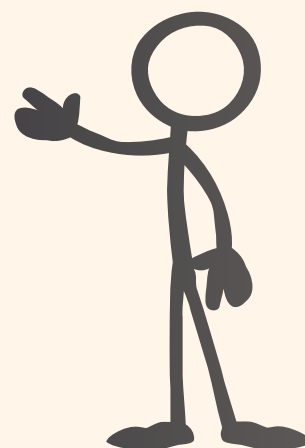
Focus on...

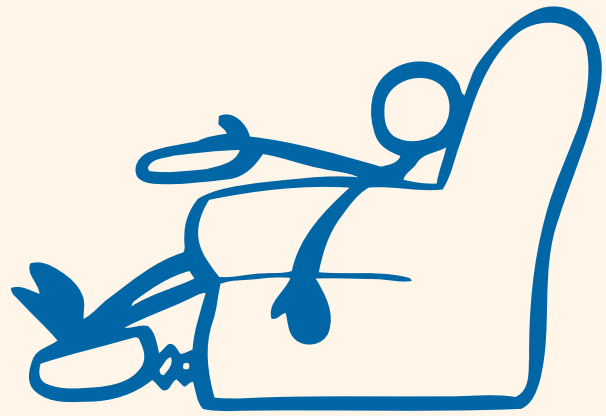
Project highlight

Latest news

Diary dates

Your say





## Focus on...

### Dyslexia in the media

**Channel 5 Documentary: My Secret Past. Monday Jan. 7th 10pm**

Boyzone singer-songwriter Shane Lynch reveals his struggle with literacy and recent diagnosis of dyslexia.

This documentary looks at the secret burden of illiteracy Shane Lynch has carried for over 30 years. Having left school at 15 he only sought help, in the form of a dyslexia assessment, when he became a father and wanted to read to his daughter. Shane hopes that by being open about his difficulties, young dyslexics will reach out for help. The documentary also features British Dyslexia Association (BDA) CEO Dr Kate Saunders.

Although the programme aired late evening, it had significant impact. The BDA Helpline received a greater number of telephone inquiries and also a 50% increase in emails in the days following the programme. These were not just from adults who were able to identify with Shane's situation, but also from parents of school age children who recognised in their own children some of the emotional issues highlighted, such as frustration and anger, leading to behavioural problems.

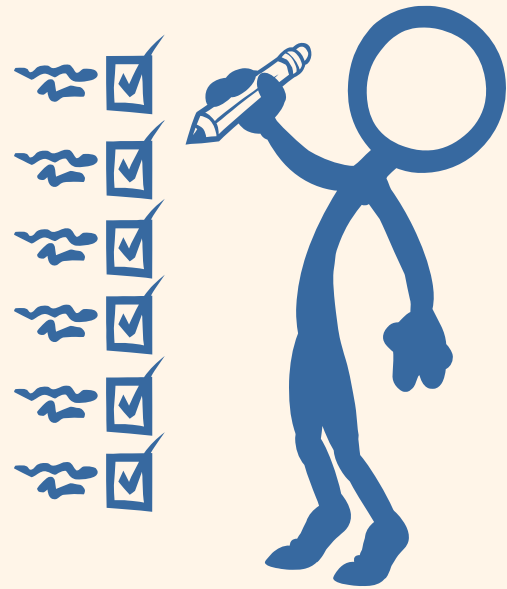
For most adult callers this was the first time they had disclosed their difficulties, which are now affecting them in the workplace. The majority of callers had questions about where and how they could get help. The disappointment for callers was to discover how little of the support for adults with dyslexia is provided free of charge, despite it being a recognised disability.

However, help is available and Channel 5 has provided a list of useful organisations on their website.

To view the programme in full, please go to:

<http://www.channel5.com/shows/my-secret-past/episodes/shane-lynch-dyslexic>





## Project highlight

### Interventions for literacy

The Dyslexia-SpLD Trust has been working with Professor Greg Brooks on the new edition of *'What works?'*.

This edition not only includes new schemes for mainstream literacy difficulties but also brand new chapters covering:

- Children with specific educational needs including dyslexia
- Young people aged 14 -18yrs, including youth offenders
- Boosting literacy at Primary/Secondary transition

A download copy of the full report will be available soon at [www.interventionsforliteracy.org.uk](http://www.interventionsforliteracy.org.uk).

Following this, the interventions database and search tool on the website will be updated in the Spring.

To learn more, please join us for our workshop session at The Education Show, Birmingham NEC, 15th March 2012

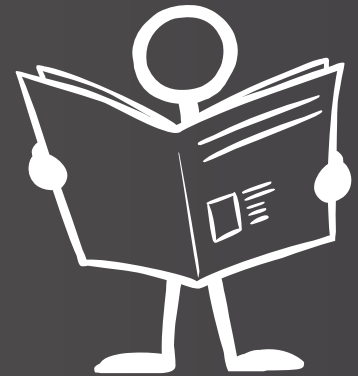


## Latest news

### Phonics Screening Check

The Trust has recently produced a guide for practitioners on supporting learners with SpLD during the Phonics Screening Check. A download copy is available from our website. To view the full guide, [click here](#).

For full details on the above mentioned evidence given by Edward Timpson on the pre-legislative scrutiny of the draft SEN provisions of the Children and Families bill, please [click here](#).



## Diary dates

### Empowering Parents and Carers conference

Saturday 2nd March, Central London

### The Literacy and Dyslexia Professional Development Framework

27th February 2012, Central London

### The Education Show

14th – 16th March 2013, NEC Birmingham





## Your say

### Parent Champions

We recently held a series of events for Parents and Carers, at which we received some great feedback. If you would like to attend one of these in your area, please check out the event calendar [here](#).

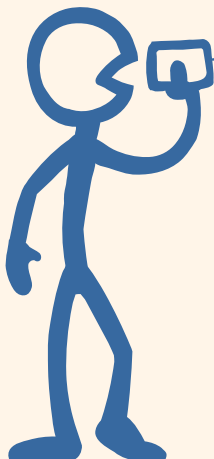
*'...am going home to make the rest of the family do this!'*

*'A lot of background – gives a positive feeling of 'I can relate to that''*


*'Thank you to everyone involved – really well done'.*

We are always looking for contributors for our newsletters so please get in touch if you have an item you would like to be included in the newsletter. Alternatively if there is something you think we need to cover, please let us know.

Email the Editor, Sarah Hanna at [sarah@thedyslexia-spldtrust.org.uk](mailto:sarah@thedyslexia-spldtrust.org.uk)



**Don't forget to 'like' us on Facebook and follow us on Twitter for more regular updates.**

 <http://www.facebook.com/dyslexiaspldtrust>

 <https://twitter.com/dyslexiaspld>

