

IN THIS EDITION

Director's message

Welcome to another edition of the Dyslexia-SpLD Trust newsletter. We hope you find the new look more user-friendly and appealing.

Our work with parents and carers is gathering interest so be sure to take a look at [the Parent Champion website](#). We are launching some expert interviews to help parents learn more about how to support their children at home by sharing answers from experts to the most frequently asked questions by parents gathered during our survey.

Another reminder, if you haven't already done so, is to log on to our new improved literacy and [dyslexia-SpLD professional development framework](#); we'd really appreciate your feedback on the new look.

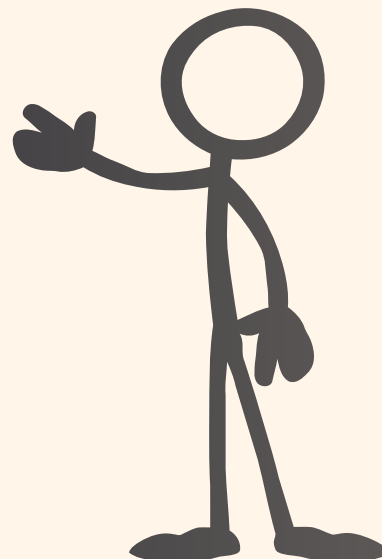
Finally, a huge 'thank you' to all who attended our stakeholder day in April this year. We were delighted at the support we received and have been overwhelmed by the interest in our case studies that model examples of good practice. If you haven't already seen them take a look [here](#).

As ever, your views are important to us - [let us know what you think](#).



Mel Byrne
Director

Director's message
Focus on...
Project highlight
Latest news
Diary dates
Your say



Focus on...

What can the Trust offer to Schools?

The collaborative programmes the Trust has undertaken and is currently pursuing, will provide valuable resources to the SEN community.

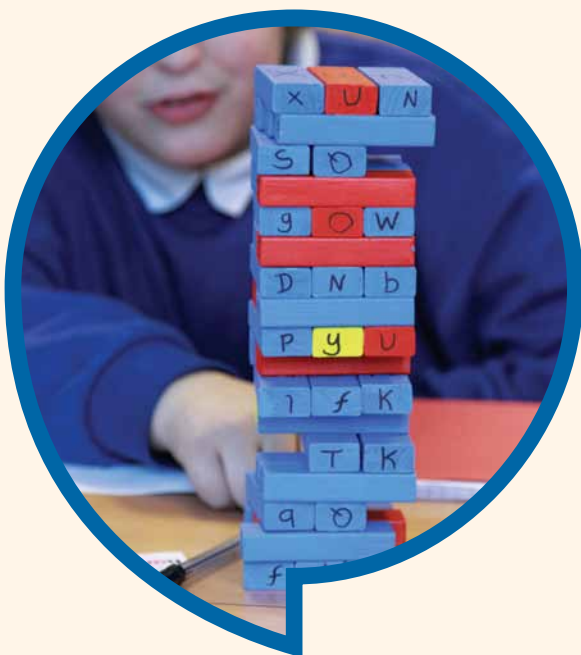


A key Trust aim has been the development of expertise across the teaching workforce and the dissemination of information about what is effective. A second thrust of the Trust's work has been our effort to ensure that this knowledge and expertise is made available in all schools. This has been achieved by providing input and advice to guide the development of services for Government and training agencies, training providers and individual schools and teachers.

With this in mind, we have produced a 32 page brochure entitled '[Trust Offer to Schools and Pathfinders](#)' available to view or download from our website. The document includes information on all the Trust's freely available resources – a professional development framework, an on-line searchable database of effective interventions, a suite of case studies and models of good practice and a support network to empower parents and carers.

The brochure also highlights the many high quality services to families and schools that the six partner organisations which form The Trust, have to offer developed from over 120 combined years of expertise and experience in delivering support to individuals with dyslexia or specific learning difficulties.

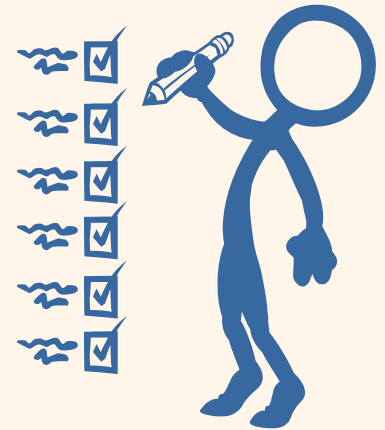
<http://www.thedyslexia-spldtrust.org.uk/4/resources/17/resources-for-schools/>



Project highlight

‘Children Will Shine’ by Margaret Malpas, Joint Chair of the BDA

In November 2010, we were driving back from the B.D.A.’s family day in York. Yet again, I had met parents, struggling to find affordable support for their dyslexic children. A sudden thought about how we could leverage the success of B.D.A. training, with this need for affordable support, was how the Children Will Shine project came about.



We could train teaching assistants (T.A.s) for free who would work within these groups, and local schools would benefit from T.A.s trained in dyslexia friendly teaching. Bingo!

As you can imagine, a tremendous amount of work has gone into the project since its inception. We now have four groups running in London and Manchester and a fifth, in Peterborough, starts in September. The children, mostly aged between 8 and 11 years, do five activities in the hour and a half sessions. They like the literacy and numeracy games best but also concentrate on phonics, sequencing, touch typing and reading activities.

The first group set up has been going for just over a year now and we have been able to review its successes and refine our operations. We have had 100 children attend; sadly quite a few of these have encountered failure more than once. Despite the “club” style atmosphere, there is real work to do here and it’s tough on top of a day at school. One of the lessons learned, is that we need the children to attend consistently and we also need parents to reinforce what we are teaching them, at home. This week sees the start of our parents’ training programme. I will be showing them what dyslexia friendly teaching is all about. They will learn why reinforcement is crucial and how to work with their child in daily bite size chunks.

Does it work? Well one of our star pupils, Carenza, has been attending for a year and mum, with guidance from us, worked with her too. She now reads fluently, spells at 95% accuracy and is well prepared for next September when she starts her secondary education.



Latest news

Did you know you can sign up to a non-member Council for Disabled Children (CDC) newsletter?

CDC produces a monthly newsletter for non CDC members. It contains much of the same information as in the member's newsletter, just without opportunities for involvement that are only offered to members.

[A copy of the May edition can be found here.](#)

CDC is keen to share information as widely as possible so if you know of a colleague who may be interested in receiving this newsletter, they can e-mail jcrangle@ncb.org.uk to subscribe.



Case studies

The Trust has launched three new case study films showing examples of best practice now available to view on our [micro-site](#). The three case studies were filmed at the beginning of the year to show the variety of successful projects funded by the Trust. The three films cover a whole authority approach to dyslexia being rolled out by Cornwall Local Authority, a sustainable whole school project at Tideway School, Newhaven using 'Partnership for Literacy' and a demonstration of the individual approach via Helen Arkell Dyslexia Centre's teaching assistant courses.

Translated parent's leaflet

The Dyslexia-SpLD Trust has published its popular parent's leaflet 'Questions about dyslexia?' into seven languages, now downloadable from the Trust website.

The leaflet is available in Arabic, Bengali, Gujarati, Polish, Punjabi, Somali and Urdu meaning parents whose first language is not English can now access information about dyslexia.

Hard copies of the leaflet can also be obtained from the British Dyslexia Association by calling 0845 251 9003.

Staff news

We welcome back our Trust manager, Sarah Hanna who has been on maternity leave since last year. Sarah works Mondays to Thursdays.

Diary dates

Dyslexia Awareness Week 2012

7th – 14th October 2012

TES Special Educational Needs Show

12th – 13th October 2012



Your say

An important function of The Dyslexia-SpLD Trust is to gather the views of stakeholders in the sector and provide feedback to government. These views are also used to help shape the work supported by the Trust.

The Dyslexia-SpLD Trust recently held an event with the aim of bringing together representatives from the sector for a day of information sharing and highlighting good practice. The day explored how effective and early intervention can have a positive impact on the schools economy and help inform decisions about the optimal time and level of interventions. It was aimed at all those working with children and young people with dyslexia or specific learning difficulties and literacy difficulties.

The response to the event was overwhelmingly positive, with 99% of responses falling in the Totally Satisfied/ Satisfied category. Comments provided by delegates included:

“It was extremely valuable to hear all that is going on especially as LA roles are now so reduced nobody seems to hold a coherent picture.”

“I learned a lot about how to support dyslexic pupils and to make classrooms more ‘dyslexia friendly.’”

“I thought the speakers were excellent and provided much to think about and act on.”

“Networking opportunities were superb. The Cornwall Advisory team mirror our own situation and the information and short films encouraged my colleague and I.”

“I’m making sure I spread the word about your Trust to as many teachers and parents as I can.”

The Trust was very pleased with the successful outcomes of the day and encouraged and motivated by the support shown by the attendees for its continuing work.

We are always looking for contributors for our newsletters so please get in touch if you have an item you would like to be included in the newsletter. Alternatively if there is something you think we need to cover, please let us know.

Email the Editor, Melissa Wood at melissa@thedyslexia-spldtrust.org.uk

